

Apex Sealing Inc.

Sealing Program
for Waste Water
Treatment Plants



Apex Sealing is proud to present our WWTP program brochure.

As a company, we have worked diligently to develop one of the country's leading wastewater sealing programs.

In today's market, it is even more critical to provide logical, cost effective and reliable sealing alternatives for the wide variety of pumps common to plants throughout North America.



This brochure will give you the scope of Apex' standard inventory items for the WWTP industry and we hope it will assist you in determining the best seals for your applications in the future.

Thank you for considering Apex Sealing.

A handwritten signature in black ink that reads "Greg Campbell". The signature is written in a cursive, flowing style.

Greg Campbell
President



Seals for Common American WWTP Pumps

Fairbanks Morse



Moyno



Smith Lovelace



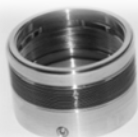
Wemco



GPM



Vaughn
Chopper



Allis Chalmers



Apex also builds seals for the following pumps:

**Goolds, Peerless, Weir, Zoeller, Myers, Hydromatic,
Tarby, Reliance, Yeomans, Flowserve and many more.**

Apex Sealing Inc. does not represent nor are we affiliated in any way with the above manufacturers. Our seals are designed to our specifications to improve the sealing quality in each piece of equipment

Apex Sealing Inc., 164 B Yankee Park Rd., Fairfax, VT, 05454, USA
toll free 888.730.2739, phone 802.524.7100, fax 802.524.7112
Email: sales@apexsealing.com, web www.apexsealing.com

Apex
SEALING, INC.

SEALS FOR SUBMERSIBLE PUMPS

Apex supplies all styles of mechanical seals for large and small submersible pumps used in waste water treatment.



Single spring, multiple spring, wave spring and welded bellows designs readily available



All Tungsten and Silicon Carbide shapes available

Specific equivalents for the following manufacturers:

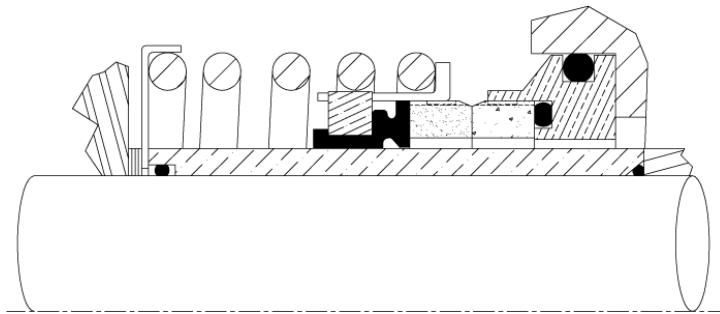
- Goulds
- Wemco
- Hidrostal
- Hydromatic
- Myers
- GPM
- Yeomans
- Zoeller
- Flowserve
- Peerless
- And many more.....



Mechanical Seals for Gorman Rupp Trash Pumps Type 3-4-6-8-10



- Rugged Replacement Seals for Trash Pumps
- Easy installation
- Fits the 3", 4", 6", 8", 10" Models
- Exact retrofit, no modifications required
- Tungsten Carbide vs. Tungsten Carbide Faces
- Complete kit includes rotary, stationary, sleeve, setting shims and "O" rings
- Non clogging design
- Most competitive prices anywhere
- Apex Sealing inventory item, ships same day from our stock



Seals for Common International WWTP Pumps

Apex Sealing is proud to maintain the largest metric seal inventory in North America. We continue to expand our inventory daily to include as many of the seals for these pumps as possible. If we don't have it, we will design it for you or find it.



- ABS
- Seepex
- Pumpex
- Davis EMU
- Godwin
- Toyo
- Tsurumi



Flygt Replacement Seal Program

- Solid Stainless Steel Construction
- Direct Replacement of OEM Flygt Seals
- Easy Installation
- Removable Wire Sets Working Length
- No Special Installation Tools
- Rugged Tungsten Carbide Seal Faces
- Upper and Lower Seals Available
- Reliable Set Screw Drives
- Most Common Models in Stock
- "O" Ring Kits for all models



Apex Sealing's S1 Single Cartridge For WWTP Pumps



Cartridge Seals have become a much more cost effective and viable alternative to WWTP's throughout the country.

Increases in reliability and safety have become critical to most plants, especially those evolving from the packed pumps of the past.

Features and Benefits:

- One of the industry's most aggressively priced stationary cartridges
- Easy cartridge installation
- Stationary multiple spring design
- Springs isolated from product
- Rugged face design
- Identical seal face shapes make repairs easy and economical
- Hydraulically balanced design
- Handles pressure reversals and vacuum
- Flush connection standard
- Vent and Drain connections available upon request
- Big Bore gland alternatives
- Interchangeable parts with D2 dual cartridges
- User friendly setting clips
- Confined gland gaskets

Standard Materials of Construction:

• Faces:

Carbon / Silicon Carbide
Silicon Carbide / Silicon Carbide
Tungsten Carbide also available

• Elastomers:

Viton*, Buna, PTFE, Neoprene, EPR, Kalrez*,
AFLAS*, Chemraz*

• Metallurgy:

304, 316, Monel, Alloy 20, Hast B+ C*



Mechanical Packing for WWTP Pumps

Apak A-12

The **Apak A-12** is a soft flexible packing constructed by x-braiding pure PTFE with graphite. An economical substitute to the Gore Fiber™.



Apak A-32

The **Apak A-32** is a high quality gland packing, constructed by x-braiding a special PTFE yarn, which incorporates graphite and high temperature lubricant.



Apak A-80

The **Apak A-80** is gland packing with special syntex fiber, with each strand impregnated with PTFE dispersion both prior to and after braiding. Finished packing also has a break-in lubricant. Asbestos replacement packing for general service applications. Good chemical resistance.



These are some of the common styles used in WWTP applications. Apex has many other braided packing styles available

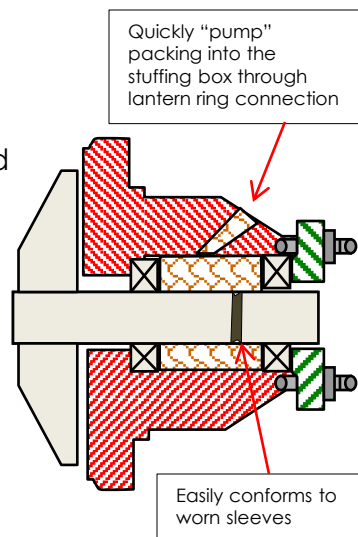
Apak AJS Joint Sealant

Apak AJS joint sealant is manufactured from pure PTFE. It is a superior and cost effective alternative to standard gasket sheets. Flexible and economical, it is fast and easy to cut and install. Resists cold flow.



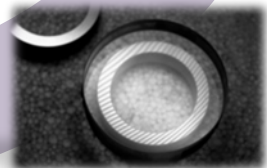
EZ-PAK Injectable Packing

EZ-PAK is a carefully controlled blend of high-tech greases and lubricants combined with modern fibers resulting in a superior product. Its malleable consistency makes it easy to use. It can be injected with a high-pressure gun or installed by hand. Unlike braided packing, no cutting is necessary. It will conform to any size stuffing box and seal it.



Apex Sealing's Seal Service Center

- Repair of all seal styles regardless of manufacturer
- Detailed breakdown and failure analysis
- Pressure tests to assure field success
- Diverse domestic and international sourcing network minimizes costs and shortens lead times
- Ultrasonic cleaning
- Precision seal surface lapping to 2-3 light bands
- Reassembly to original OEM specifications
- Pay only the wholesale costs for replaced parts and labor



We do not “guesstimate” what the customers can bear or what the OEM might charge. Just a fair cost to get the job done correctly.

Consistently, we offer the industry's most aggressive price structures.